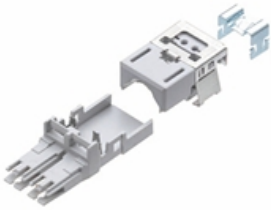


R319036 RMS45 Plug 2-Pair, shielded

090.2852

**Description**

Field-terminated 2-pair plug, shielded. Fast and simple connecting.

Cable information:

- Round cables Ø 3.2 mm up to Ø 5.5 mm
- Wires and strands AWG26-24
- Conductor insulation max. Ø 1.1 mm

Weight

1.300 G

Technical Data

Connector class	connector
Number of connectors (A)	1
Connector type (A)	RMS45
Shielding - connector (A)	Yes
Color code RAL	7035
Color	light gray
Dimensions	26.5 x 11 x 8.6 mm
Material	Kunststoff: PEI
Poles	4

Modules & Accessories

R319031	Color Coding RMS45, anthracite
R319024	Color Coding RMS45, blue
R319025	Color Coding RMS45, brown
R319026	Color Coding RMS45, yellow
R319027	Color Coding RMS45, gray
R319028	Color Coding RMS45, green
R319029	Color Coding RMS45, red
R319030	Color Coding RMS45, violet