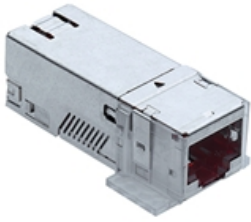


**R509505 Connection Module Cat.6A ISO, 1xRJ45/s, 100x**

---

090.5360 Similar product

**Scope of supply**

- RJ45 Cat.6A ISO connection module, shielded
- Mounting plate
- EMC cover
- Dust cover
- Cable tie
- Installation instructions

**Weight**

17.600 G

**Technical Data**

Standardisation	IEC 60603-7-51: Electrical Characteristics of the Telecommunication Outlets; ISO/IEC 11801 ed. 2.2: June 2011; EN 50173-1: May 2011;
Connector class	Connection module
Connector type (A)	RJ45
Category connector (A)	Cat.6A ISO
Shielding - connector (A)	Yes
Holder for connector / module	Support Plate
Color	red
Material	housing plastic: PC, UL 94 V-0
Wiring diagram	568A / 568B
Poles	8

## Tender text

---

Connection Module, Cat.6A ISO, 1 x RJ45, shielded

RJ45 connection module of Cat.6A ISO, for the setting up of transmission channels of Class EA with up to 4 plugged connections acc. to ISO/IEC 11801 ed. 2.2, June 2011, EN 50173-1 May 2011 (DIN EN 50173-1) and Class F on 2 pairs, complies with Cat.6A requirements of the standards ISO/IEC 11801 ed. 2.2, June 2011, EN 50173-1 May 2011, as well as ANSI/TIA/EIA 568-C.2, re-embedded tested in acc. with IEC 60603-7-51 and 60512-27-100, interoperable and backwards compatible with Category 6 and Category 5e.

Suitable for 10GBase-T applications in acc. with IEEE 802.3an up to 500 MHz and 100 m.

Tested in line with R&M's manufacturing control, performing 100% inspection.

Compatible with RJ standard plugs (RJ11, RJ12, RJ45), connection with automatic wire cutting of installation cables AWG 26 – 22 (0.4 mm – 0.65 mm) and flexible cables AWG 26/7 – AWG 22/7 without special tools. X-Separator for individual pair shielding. Parallel pair termination without crossover in acc. with EIA/TIA 568-A/B, gold-plated bronze contacts for >1000 mating cycles, IDC contacts with >20 insertion cycles, contact resistance 1000 Veff. PoE/PoEplus capable, 90° wire orientation without bending cable. With integral cable strain relief, including dust cover. Shield contacting by patented shield lance with integral cable strain relief, shield material tin-coated bronze, ground contacting through 1 contact finger for flat connectors 4.8 x 0.5 mm.

Material: heavy-metal free in acc. with EU directives RoHS and WEEE.

Connection module Cat.6A ISO, shielded, with EMC cover, dust cover, mounting plate, cable tie and installation instructions.

## Modules & Accessories

---

R804325	Cable Preparation Tool Cat.6A ISO
R516050	Termination Tool Cat.6A ISO

---